

REAL ESTATE

NATIVU

Unique lifestyle in the
heart of the city at

Escazú Village

5 different models to choose from



Paola Mazzara

paolam@nativu.com

Cel: +506 8330-4507



LOCATION

Escazú, Costa Rica

- ➔ At the entrance of Trejos Montealegre
- ➔ Mixed building with panoramic views
- ➔ Full amenities included





Amenities

Olimpic Pool

Co-working space

Recreational Pool

Lounge room

Playground

Media & Game room

Gym

2 Rooftop Terraces

Meeting room

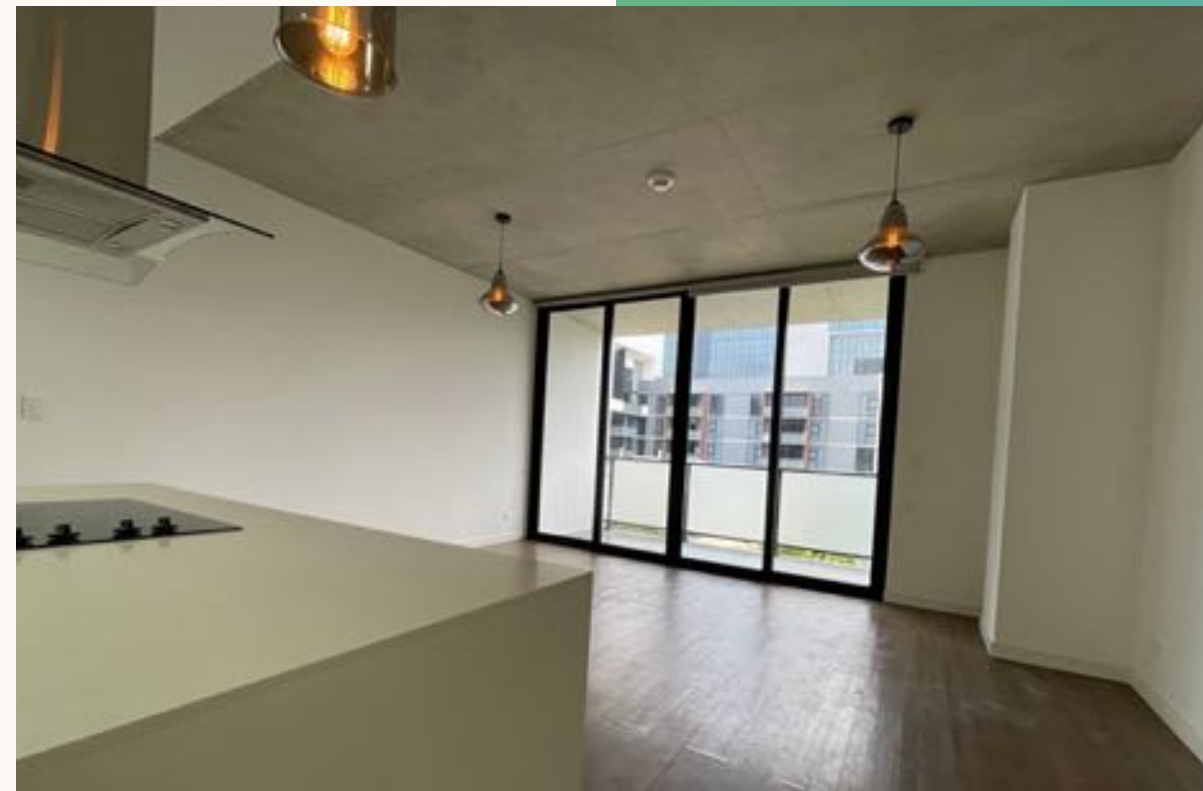
Lounge Area

Flat 1

\$228,500

- 1 Bedroom
- 1 Bathroom
- 1 parking space
- Walking Closet
- Air Conditioner
- Euromobilia Furniture
- Quartz Countertops
- Equipped with full stainless appliances
- Balcony with view of the pool and the mountains of Escazú





Flat 2

\$285,000

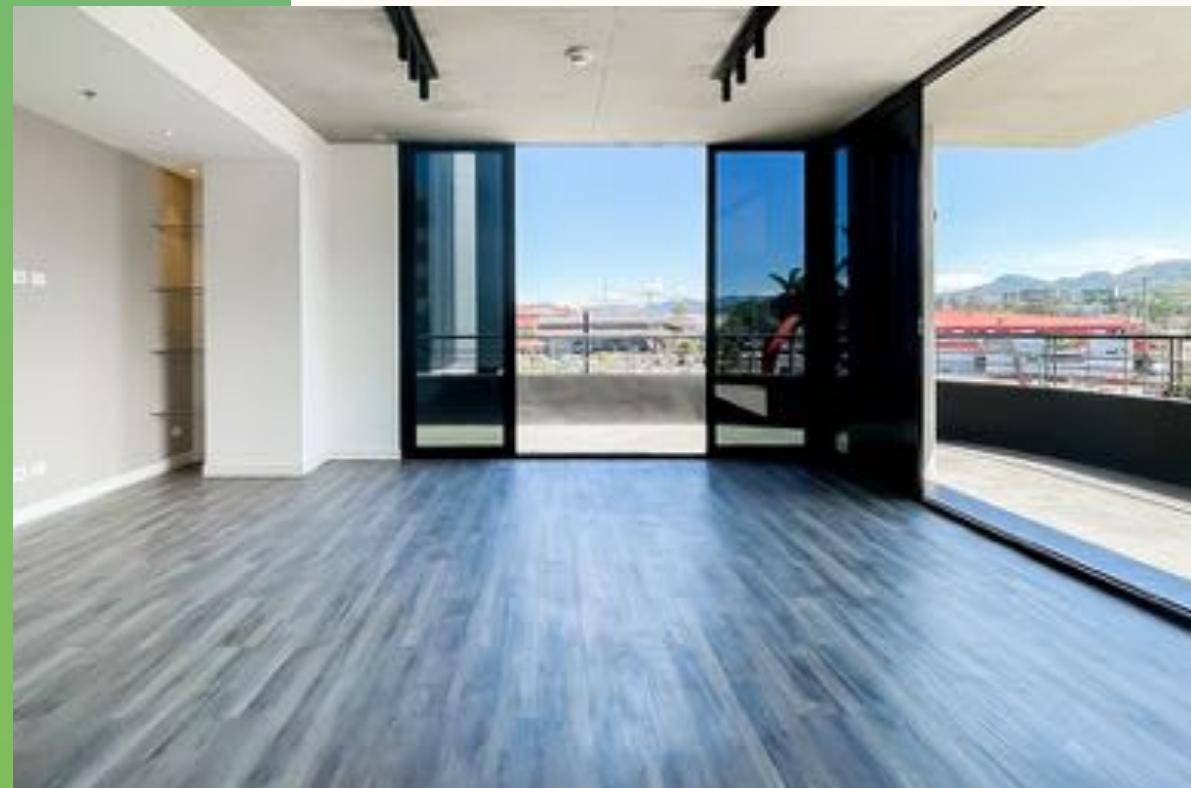
- 2 Bedroom
- 2 Bathroom
- 2 parking space
- Walking Closet
- Air conditioner
- Right in front of the swimming-pool area
- Large Windows
- All Appliances
- Built-in Kitchen

NATIVU

Alpha 2

\$430,000

- 2 Bedroom
- 2 Bathroom
- 2 parking spaces
- Floors in marbled sand tone
- Large windows with sliding glass doors
- Large Corner Terrace
- Minimalistic & contemporary two-toned cabinets
- Black quartz countertop
- Panoramic Views



Alpha 3

\$520,000

- 3 Bedroom
- 2 Bathroom
- 3 parking space
- Walking Closet
- Air conditioner
- Large Windows
- Corner location with panoramic views
- Terrace
- Black Quartz Countertop
- Polished Cement Ceilings



PENTHOUSE 1

\$399,000

- 2-level apartment
- 1 bedroom
- Walk-in Closet
- 1 bathroom
- 2 parking spaces
- Air Conditioner
- Double height ceilings
- White quartz countertops
- Balcony with panoramic views





PENTHOUSE 2

\$510,000

- 2-level apartment
- 3 bedroom
- 2 bathroom
- 2 parking spaces
- Walk-in Closets
- Air Conditioner
- Double height ceilings
- White quartz countertops and Euromobilia cabinetry
- Balcony with Mountain Views

Paola Mazzara

Cel: +506 8330-
4507

Tel: +506 4001-
2481

paolam@nativu.com



Specialist Advisor
NATIVU Escazú